

Treasury Management Update

Quarterly report
31st December 2023 (Q3 2023/24)

Contents

Treasury Management Update	3
Quarter Ended 31st December 2023 (Q3 2023/24).....	3
1. Economics update	3
2. Interest rate forecasts.....	6
3. Annual Investment Strategy.....	9
4. Borrowing	12
6. Compliance with Treasury and Prudential Limits	13
7. Other	Error! Bookmark not defined.
APPENDIX 1: Prudential and Treasury Indicators for 2023-24 as of 31st December 2023.....	14
APPENDIX 2: Investment Portfolio	16
APPENDIX 3: Approved countries for investments as of 31st December 2023.....	17

Treasury Management Update

Quarter Ended 31st December 2023 (Q3 2023/24)

The CIPFA (Chartered Institute of Public Finance and Accountancy) Code of Practice for Treasury Management 2021 recommends that members be updated on treasury management activities at least quarterly. This report, therefore, ensures this Council is implementing best practice in accordance with the Code.

1. Economics update

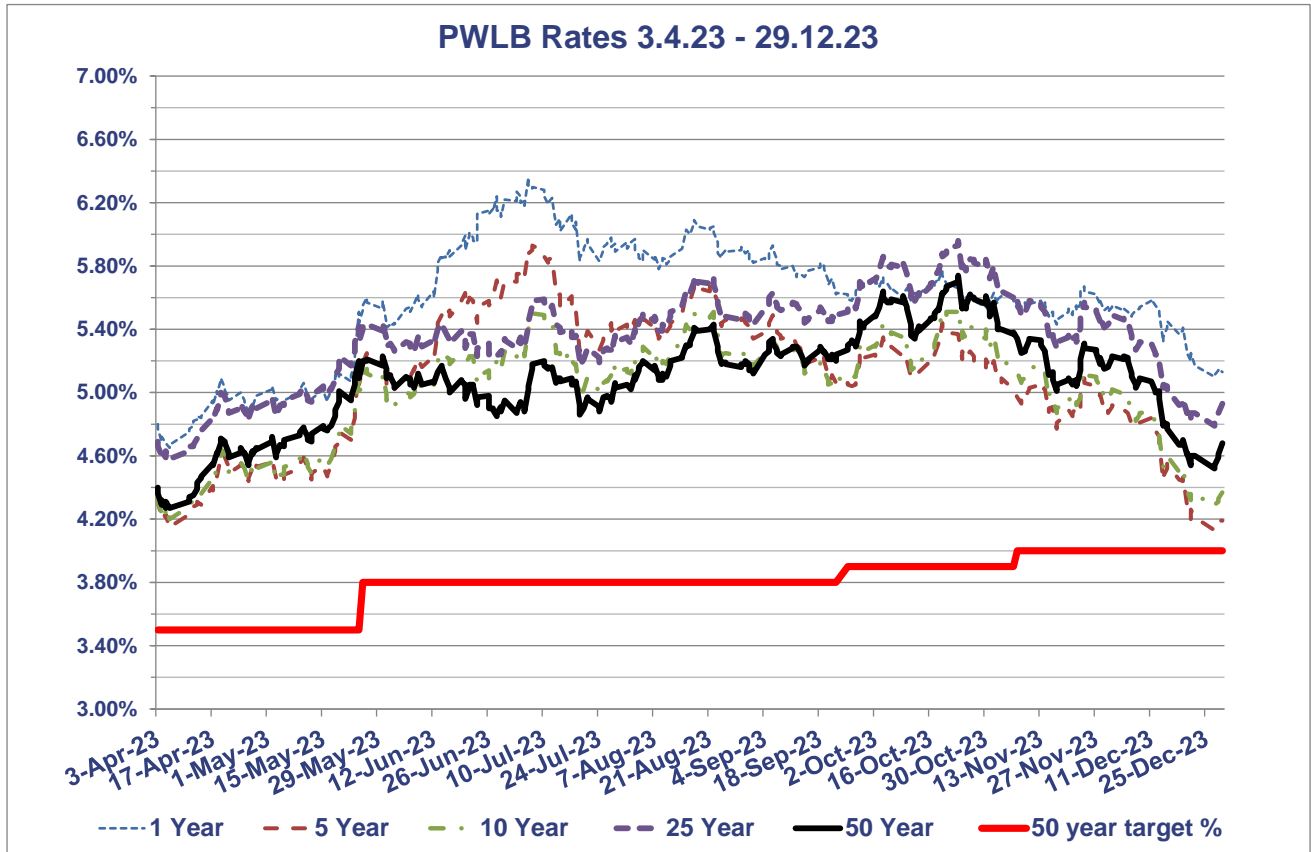
- The third quarter of 2023/24 saw:
 - A 0.3% m/m decline in real GDP in October, potentially partly due to unseasonably wet weather, but also due to the ongoing drag from higher interest rates. Growth for the second quarter, ending 30th September, was revised downwards to -0.1% and growth on an annual basis was also revised downwards, to 0.3%;
 - A sharp fall in wage growth, with the headline 3myr rate declining from 8.0% in September to 7.2% in October, although the ONS “experimental” rate of unemployment has remained low at 4.2%;
 - CPI inflation continuing on its downward trajectory, from 8.7% in April to 4.6% in October, then again to 3.9% in November;
 - Core CPI inflation decreasing from April and May’s 31 years’ high of 7.1% to 5.1% in November, the lowest rate since January 2022;
 - The Bank of England holding rates at 5.25% in November and December;
 - A steady fall in 10-year gilt yields as investors revised their interest rate expectations lower.
- The revision of GDP data in Q2 to a 0.1% q/q fall may mean the mildest of mild recessions has begun. Indeed, real GDP in October fell 0.3% m/m which does suggest that the economy may stagnate again in Q3. The weakness in October may partly be due to the unseasonably wet weather. That said, as the weakness was broad based it may also be the case that the ongoing drag from higher interest rates is more than offsetting any boost from the rise in real wages.
- However, the rise in the flash composite activity Purchasing Managers Index, from 50.7 in November to 51.7 in December, did increase the chances of the economy avoiding a contraction in Q3. The improvement was entirely driven by the increase in the services activity balance from 50.9 to 52.7. (Scores above 50 point to expansion in the economy, although only tepid in this instance.) The press release noted that this was primarily driven by a revival in consumer demand in the technological and financial services sectors. This chimes with the further improvement in the GfK measure of consumer confidence in December, from -24 to -22. The services PMI is now consistent with non-retail services output growing by 0.5% q/q in Q3, but this is in stark contrast to the manufacturing sector where the output balance slumped from 49.2 to 45.9 and, at face value, the output balance is consistent with a 1.5% q/q fall in manufacturing output in Q3.
- The 0.3% m/m fall in retail sales volumes in October means that after contracting by 1.0% q/q (which was downwardly revised from -0.8% q/q) in Q2, retail activity remained weak at the start of Q3. That suggests higher interest rates are taking a bigger toll on real consumer spending.
- Higher interest rates have filtered through the financial channels and weakened the housing market but, overall, it remains surprisingly resilient with only marginal falls showing year on year on the Halifax (-1%) and Nationwide (-1.8%) indices. However, the full weakness in real consumer spending and real business investment has yet to come as currently it is estimated that around two thirds to a half of the impact of higher interest rates on household interest payments has yet to be felt.
- Overall, we expect real GDP growth to remain subdued throughout 2024 as the drag from higher interest rates is protracted but a fading of the cost-of-living crisis and interest rate cuts in the second half of 2024 will support a recovery in GDP growth in 2025.
- The labour market remains tight by historical standards, but the sharp fall in wage growth seen in October will reinforce the growing belief in markets that interest rates will be cut mid-2024. Wage growth eased in October much faster than the consensus expected. Total earnings fell by 1.6% m/m, which meant the headline 3myr rate eased from 8.0% in September to 7.2% in October. This news will be welcomed by the

Bank of England. Indeed, the timelier three-month annualised rate of average earnings growth fell from +2.4% to -1.2%. Excluding bonuses, it fell from 5.3% to 2.0%. Furthermore, one of the Bank's key barometers of inflation persistence, regular private sector pay growth, dropped from 7.9% 3myy to 7.3%, which leaves it comfortably on track to fall to 7.2% by December, as predicted by the Bank in November.

- The fall in wage growth occurred despite labour demand being stronger in October than expected. The three-month change in employment eased only a touch from +52,000 in September to +50,000 in October. But resilient labour demand was offset by a further 63,000 rise in the supply of workers in the three months to October. That meant labour supply exceeded its pre-pandemic level for the first time, and the unemployment rate remained at 4.2% in October. In the three months to November, the number of job vacancies fell for the 17th month in a row, from around 959,000 in October to around 949,000. That has reduced the vacancy to unemployment ratio as demand for labour eases relative to supply, which may support a further easing in wage growth in the coming months.
- CPI inflation fell from 6.7% in September to 4.6% in October, and then again to 3.9% in November. Both these falls were bigger than expected and there are clear signs of easing in domestic inflationary pressures. The fall in core CPI inflation from 5.7% to 5.1% in November was bigger than expected (consensus forecast 5.6%). That's the lowest rate since January 2022. Some of the decline in core inflation was due to the global influence of core goods inflation, which slowed from 4.3% to 3.3%. But some of it was due to services inflation falling from 6.6% to 6.3%. The Bank views the latter as a key barometer of the persistence of inflation and it came in further below the Bank's forecast of 6.9% in its November Monetary Policy Report. This will give the Bank more confidence that services inflation is now on a firmly downward path.
- The Bank of England sprung no surprises with its December monetary policy committee (MPC) meeting, leaving interest rates at 5.25% for the third time in a row and pushing back against the prospect of near-term interest rate cuts. The Bank continued to sound hawkish, with the MPC maintaining its tightening bias saying that "further tightening in monetary policy would be required if there were evidence of more persistent inflationary pressures". And it stuck to the familiar script, saying that policy will be "sufficiently restrictive for sufficiently long" and that "monetary policy is likely to need to be restrictive for an extended period of time". In other words, the message is that the MPC is not yet willing to endorse investors' expectations that rates will be cut as soon as May 2024.
- Looking ahead, our colleagues at Capital Economics forecast that the recent downward trends in CPI and core inflation will stall over the next few months before starting to decline more decisively again in February. That explains why we think the Bank of England won't feel comfortable cutting interest rates until H2 2024.
- The fall in UK market interest rate expectations in December has driven most of the decline in 10-year gilt yields, which have fallen in line with 10-year US Treasury and euro-zone yields. 10-year gilt yields have fallen from 4.68% in October 2023 to around 3.70% at the time of writing, with further declines likely if the falling inflation story is maintained.
- Investors' growing expectations that the Fed will cut interest rates soon has led to an improvement in risk sentiment, which has boosted the pound and other risky assets. In addition, the rise in the pound, from \$1.21 in November to \$1.27 now, has also been supported by the recent relative decline in UK wholesale gas prices.
- The further fall in 10-year real gilt yields in December has supported the recent rise in the FTSE 100. That said, the index remains 5% below its record high in February. This modest rise in equities appears to have been mostly driven by strong performances in the industrials and rate-sensitive technology sectors. But UK equities have continued to underperform US and euro-zone equities. The FTSE 100 has risen by 2.2% in December, while the S&P 500 has risen by 3.8%. This is partly due to lower energy prices, which have been a relatively bigger drag on the FTSE 100, due to the index's high concentration of energy companies.

In the chart below, the rise in gilt yields across the curve in the first half of 2023/24, and therein PWLB rates, is clear to see, prior to the end of year rally based on a mix of supportive domestic and international factors.

PWLB RATES 3.4.23 - 29.12.23



MPC meetings 2nd November and 14th December 2023

- On 2nd November, the Bank of England’s Monetary Policy Committee (MPC) voted to keep Bank Rate on hold at 5.25%, and on 14th December reiterated that view. Both increases reflected a split vote, the latter by 6 votes to 3, with the minority grouping voting for an increase of 0.25% as concerns about “sticky” inflation remained in place.
- Nonetheless, with UK CPI inflation now at 3.9%, and core inflating beginning to moderate (5.1%), markets are voicing a view that rate cuts should begin in Q1 2024/25, some way ahead of the indications from MPC members. Of course, the data will be the ultimate determinant, so upcoming publications of employment, wages and inflation numbers will be of particular importance, and on-going volatility in Bank Rate expectations and the gilt yield curve can be expected.
- In addition, what happens outside of the UK is also critical to movement in gilt yields. The US FOMC has kept short-term rates in the range of 5.25%-5.50%, whilst the ECB has moved its Deposit rate to a probable peak of 4%. Markets currently expect both central banks to start cutting rates in 2024.

2. Interest rate forecasts

The Council has appointed Link Group as its treasury advisors and part of their service is to assist the Council to formulate a view on interest rates. The PWLB rate forecasts below are based on the Certainty Rate (the standard rate minus 20 bps) which has been accessible to most authorities since 1st November 2012.

Link Group Interest Rate View 07.11.23													
	Dec-23	Mar-24	Jun-24	Sep-24	Dec-24	Mar-25	Jun-25	Sep-25	Dec-25	Mar-26	Jun-26	Sep-26	Dec-26
BANK RATE	5.25	5.25	5.25	5.00	4.50	4.00	3.50	3.25	3.00	3.00	3.00	3.00	3.00
3 month ave earnings	5.30	5.30	5.30	5.00	4.50	4.00	3.50	3.30	3.00	3.00	3.00	3.00	3.00
6 month ave earnings	5.60	5.50	5.40	5.10	4.60	4.10	3.60	3.40	3.10	3.10	3.10	3.10	3.10
12 month ave earnings	5.80	5.70	5.50	5.20	4.70	4.20	3.70	3.50	3.30	3.30	3.30	3.30	3.30
5 yr PWLB	5.00	4.90	4.80	4.70	4.40	4.20	4.00	3.80	3.70	3.60	3.50	3.50	3.50
10 yr PWLB	5.10	5.00	4.80	4.70	4.40	4.20	4.00	3.80	3.70	3.70	3.60	3.60	3.50
25 yr PWLB	5.50	5.30	5.10	4.90	4.70	4.50	4.30	4.20	4.10	4.10	4.00	4.00	4.00
50 yr PWLB	5.30	5.10	4.90	4.70	4.50	4.30	4.10	4.00	3.90	3.90	3.80	3.80	3.80

Link Group Interest Rate View 25.09.23													
	Dec-23	Mar-24	Jun-24	Sep-24	Dec-24	Mar-25	Jun-25	Sep-25	Dec-25	Mar-26	Jun-26	Sep-26	Dec-26
BANK RATE	5.25	5.25	5.25	5.00	4.50	4.00	3.50	3.00	2.75	2.75	2.75	2.75	2.75
3 month ave earnings	5.30	5.30	5.30	5.00	4.50	4.00	3.50	3.00	2.80	2.80	2.80	2.80	2.80
6 month ave earnings	5.60	5.50	5.40	5.10	4.60	4.10	3.60	3.10	2.90	2.90	2.90	2.90	2.90
12 month ave earnings	5.80	5.70	5.50	5.20	4.70	4.20	3.70	3.20	3.00	3.00	3.00	3.00	3.00
5 yr PWLB	5.10	5.00	4.90	4.70	4.40	4.20	4.00	3.90	3.70	3.70	3.60	3.60	3.50
10 yr PWLB	5.00	4.90	4.80	4.60	4.40	4.20	4.00	3.80	3.70	3.60	3.60	3.50	3.50
25 yr PWLB	5.40	5.20	5.10	4.90	4.70	4.40	4.30	4.10	4.00	3.90	3.80	3.80	3.80
50 yr PWLB	5.20	5.00	4.90	4.70	4.50	4.20	4.10	3.90	3.80	3.70	3.60	3.60	3.60

Link Group Interest Rate View 26.06.23													
	Jun-23	Sep-23	Dec-23	Mar-24	Jun-24	Sep-24	Dec-24	Mar-25	Jun-25	Sep-25	Dec-25	Mar-26	Jun-26
BANK RATE	5.00	5.50	5.50	5.50	5.25	4.75	4.25	3.75	3.25	2.75	2.75	2.50	2.50
3 month ave earnings	5.30	5.60	5.50	5.30	5.00	4.50	4.00	3.50	3.00	2.70	2.60	2.50	2.50
6 month ave earnings	5.80	5.90	5.70	5.50	5.10	4.60	4.00	3.50	3.00	2.70	2.60	2.60	2.60
12 month ave earnings	6.30	6.20	6.00	5.70	5.30	4.80	4.10	3.60	3.10	2.80	2.70	2.70	2.70
5 yr PWLB	5.50	5.60	5.30	5.10	4.80	4.50	4.20	3.90	3.60	3.40	3.30	3.30	3.20
10 yr PWLB	5.10	5.20	5.00	4.90	4.70	4.40	4.20	3.90	3.70	3.50	3.50	3.50	3.40
25 yr PWLB	5.30	5.40	5.20	5.10	4.90	4.70	4.50	4.20	4.00	3.90	3.80	3.80	3.70
50 yr PWLB	5.00	5.10	5.00	4.90	4.70	4.50	4.30	4.00	3.80	3.60	3.60	3.50	3.50

Link Group Interest Rate View 24.05.23													
	Jun-23	Sep-23	Dec-23	Mar-24	Jun-24	Sep-24	Dec-24	Mar-25	Jun-25	Sep-25	Dec-25	Mar-26	Jun-26
BANK RATE	4.75	5.00	5.00	4.75	4.50	4.00	3.50	3.25	2.75	2.50	2.50	2.50	2.50
3 month ave earnings	4.80	5.00	5.00	4.80	4.50	4.00	3.50	3.30	2.80	2.50	2.50	2.50	2.50
6 month ave earnings	5.10	5.20	5.10	4.90	4.50	3.90	3.40	3.20	2.90	2.60	2.60	2.60	2.60
12 month ave earnings	5.40	5.40	5.30	5.00	4.50	3.90	3.40	3.20	2.90	2.70	2.70	2.70	2.70
5 yr PWLB	5.00	5.00	5.00	4.80	4.50	4.10	3.70	3.50	3.30	3.20	3.20	3.10	3.10
10 yr PWLB	5.00	5.00	5.00	4.80	4.40	4.10	3.80	3.60	3.50	3.40	3.30	3.30	3.30
25 yr PWLB	5.30	5.30	5.20	5.10	4.80	4.50	4.20	4.00	3.80	3.70	3.60	3.60	3.60
50 yr PWLB	5.10	5.10	5.00	4.90	4.60	4.30	4.00	3.80	3.60	3.50	3.40	3.40	3.40

Link Group Interest Rate View 27.03.23													
	Jun-23	Sep-23	Dec-23	Mar-24	Jun-24	Sep-24	Dec-24	Mar-25	Jun-25	Sep-25	Dec-25	Mar-26	Jun-26
BANK RATE	4.50	4.50	4.25	4.00	3.50	3.25	3.00	2.75	2.75	2.50	2.50	2.50	2.50
3 month ave earnings	4.50	4.50	4.30	4.00	3.50	3.30	3.00	2.80	2.80	2.50	2.50	2.50	2.50
6 month ave earnings	4.50	4.40	4.20	3.90	3.40	3.20	2.90	2.80	2.80	2.60	2.60	2.60	2.60
12 month ave earnings	4.50	4.40	4.20	3.80	3.30	3.10	2.70	2.70	2.70	2.70	2.70	2.70	2.70
5 yr PWLB	4.10	4.10	3.90	3.80	3.70	3.60	3.50	3.40	3.30	3.20	3.20	3.10	3.10
10 yr PWLB	4.20	4.20	4.00	3.90	3.80	3.70	3.50	3.50	3.40	3.30	3.30	3.30	3.20
25 yr PWLB	4.60	4.50	4.40	4.20	4.10	4.00	3.80	3.70	3.60	3.50	3.50	3.50	3.40
50 yr PWLB	4.30	4.20	4.10	3.90	3.80	3.70	3.50	3.50	3.30	3.20	3.20	3.20	3.10

- LIBOR and LIBID rates ceased at the end of 2021. In a continuation of previous views, money market yield forecasts are based on expected average earnings by local authorities for 3 to 12 months.

- The Link forecast for average earnings are averages i.e., rates offered by individual banks may differ significantly from these averages, reflecting their different needs for borrowing short-term cash at any one point in time.

A SUMMARY OVERVIEW OF THE FUTURE PATH OF BANK RATE

- Our central forecast for interest rates was previously updated on 7th November and reflected a view that the MPC would be keen to underpin its anti-inflation credentials by keeping Bank Rate at 5.25% until at least H2 2024. We expect rate cuts to start when both the CPI inflation and wage/employment data are unequivocally supportive of such a move, and that there is a strong likelihood of the overall economy enduring tepid growth (at best) or a mild recession (at worst) over the coming months.
- Naturally, timing on this matter will remain one of fine judgment: cut too soon, and inflationary pressures may well build up further; cut too late and any downturn or recession may be prolonged.
- In the upcoming months, our forecasts will be guided not only by economic data releases and clarifications from the MPC over its monetary policies and the Government over its fiscal policies, but also international factors such as policy development in the US and Europe, the provision of fresh support packages to support the faltering recovery in China as well as the on-going conflict between Russia and Ukraine, and Gaza and Israel.
- On the positive side, consumers are still anticipated to be sitting on some excess savings left over from the pandemic, which could cushion some of the impact of the above challenges and may be the reason why the economy is performing a little better at this stage of the economic cycle than may have been expected. Nonetheless, with approximately 400,000 households per quarter facing a mortgage interest reset at higher levels than their current rate, the economy will face on-going headwinds from that source, in addition to lower income households having to spend disproportionately on essentials such as food, energy and rent payments.

PWLB RATES

- As illustrated in the charts in section 1, gilt yields have endured a volatile nine months with yields rising significantly on the back of inflation concerns before retracing much of those increases in November and December. With the market now anticipating rate cuts by H2 2024, the short and medium parts of the curve are now close to where they started 2023/24, but the longer part of the curve is still a little higher. At the time of writing there is c50 basis points difference between the 5 and 50 year parts of the curve.

The balance of risks to the UK economy: -

- The overall balance of risks to economic growth in the UK is to the downside.

Downside risks to current forecasts for UK gilt yields and PWLB rates include: -

- **Labour and supply shortages** prove more enduring and disruptive and depress economic activity (accepting that in the near-term this is also an upside risk to inflation and, thus, could keep gilt yields high for longer).
- **The Bank of England** has increased Bank Rate too fast and too far over recent months, and subsequently brings about a deeper and longer UK recession than we currently anticipate.
- **UK / EU trade arrangements** – if there was a major impact on trade flows and financial services due to complications or lack of co-operation in sorting out significant remaining issues.
- **Geopolitical risks**, for example in Ukraine/Russia, the Middle East, China/Taiwan/US, Iran and North Korea, which could lead to increasing safe-haven flows.

Upside risks to current forecasts for UK gilt yields and PWLB rates: -

- Despite the recent tightening to 5.25%, the **Bank of England proves too timid** in its pace and strength of increases in Bank Rate and, therefore, allows inflationary pressures to remain elevated for a longer period within the UK economy, which then necessitates Bank Rate staying higher for longer than we currently project.

- **The pound weakens** because of a lack of confidence in the UK Government's pre-election fiscal policies, resulting in investors pricing in a risk premium for holding UK sovereign debt.
- Longer-term **US treasury yields** rise strongly if inflation remains more stubborn there than the market currently anticipates, consequently pulling gilt yields up higher.
- Projected **gilt issuance, inclusive of natural maturities and Quantitative Tightening (QT)**, could be too much for the markets to comfortably digest without higher yields compensating.

3. Annual Investment Strategy

The Treasury Management Strategy Statement (TMSS) for 2023/24, which includes the Annual Investment Strategy, was approved by the Council on 23rd February 2023. In accordance with the CIPFA Treasury Management Code of Practice, it sets out the Council's investment priorities as being:

- Security of capital
- Liquidity
- Yield

The Council will aim to achieve the optimum return (yield) on its investments commensurate with proper levels of security and liquidity, aligned with the Council's risk appetite. In the current economic climate, over and above keeping investments short-term to cover cash flow needs, there is a benefit to seek out value available in periods up to 12 months with high credit rated financial institutions, using the Link suggested creditworthiness approach, including a minimum sovereign credit rating and Credit Default Swap (CDS) overlay information.

As shown by the charts below and the interest rate forecasts in section 2, investment rates have remained elevated during 2023/24 but are now expected to have peaked.

Creditworthiness.

There have been few changes to credit ratings over the quarter under review. However, officers continue to closely monitor these, and other measures of creditworthiness to ensure that only appropriate counterparties are considered for investment purposes.

Investment counterparty criteria

The current investment counterparty criteria selection approved in the TMSS is meeting the requirement of the treasury management function.

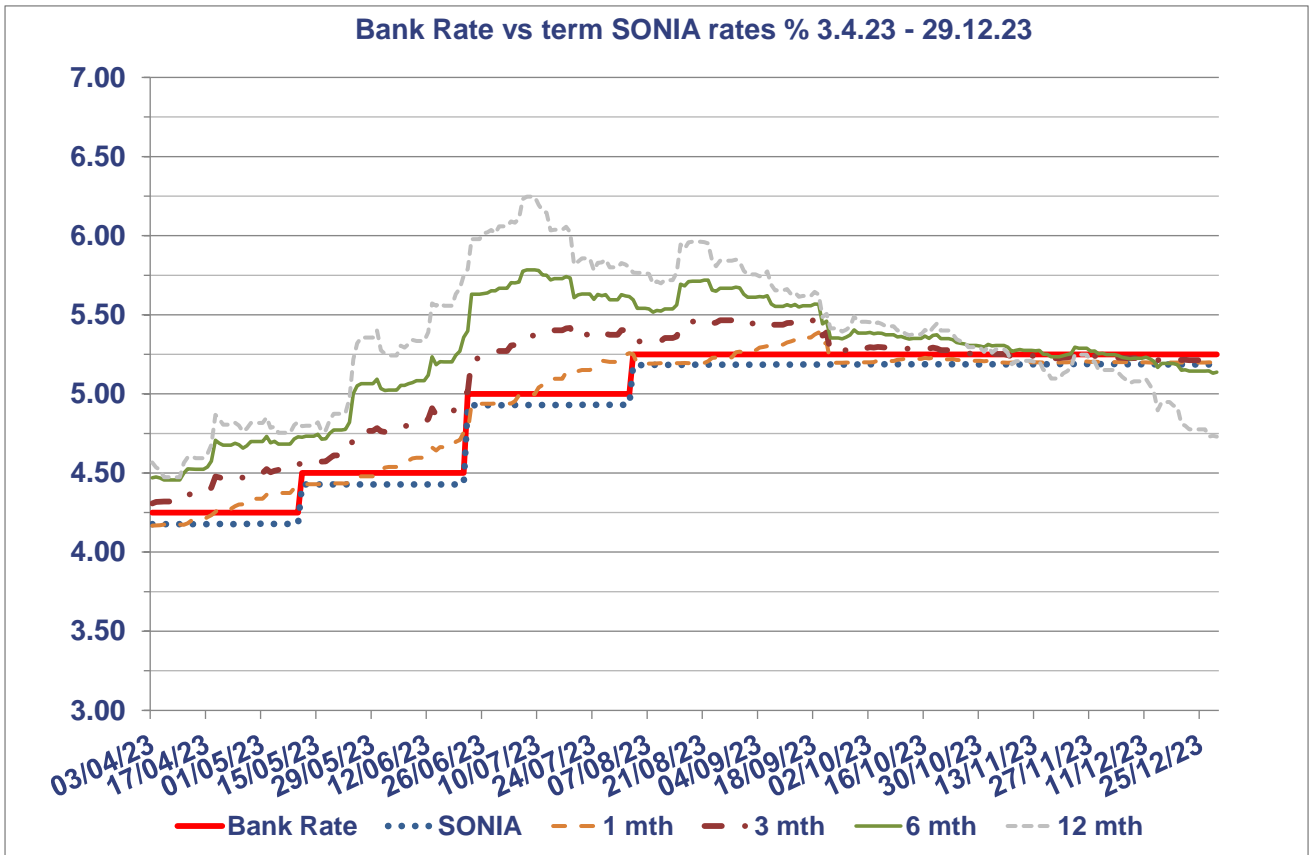
CDS prices

For UK banks, there are no underlying negative themes. Prices are not misaligned with other creditworthiness indicators, such as credit ratings. Nevertheless, it remains important to undertake continual monitoring of all aspects of risk and return in the current circumstances.

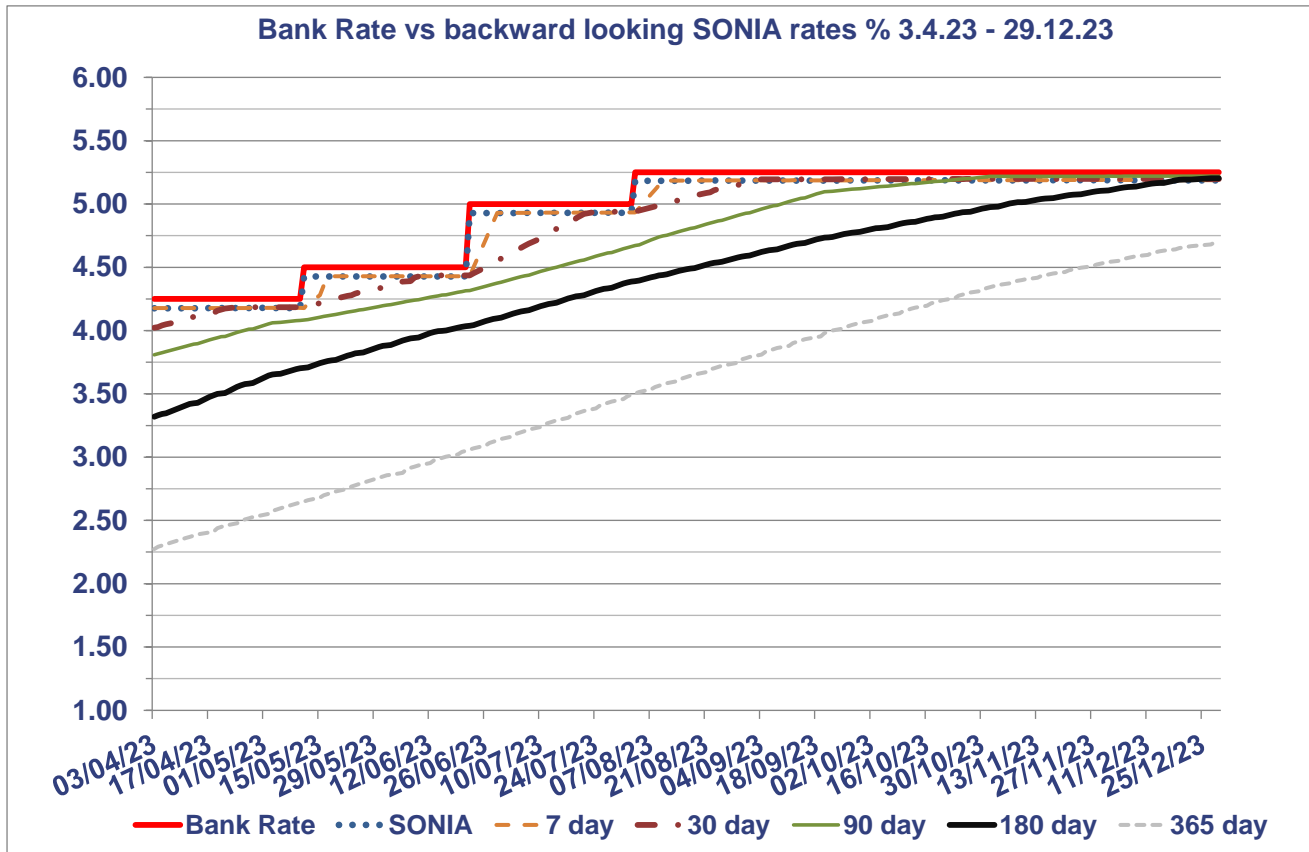
Investment balances

The average level of funds available for investment purposes during the quarter was **£25.340m**. These funds were available on a temporary basis, and the level of funds available was mainly dependent on the timing of precept payments, receipt of grants and progress on the capital programme. The Council holds **£2m** core cash balances for investment purposes (i.e., funds available for more than one year).

Investment performance 3.4.23 to 29.12.23



FINANCIAL YEAR TO QUARTER ENDED 29/12/2023						
	Bank Rate	SONIA	1 mth	3 mth	6 mth	12 mth
High	5.25	5.19	5.39	5.48	5.78	6.25
High Date	03/08/2023	24/11/2023	19/09/2023	30/08/2023	07/07/2023	07/07/2023
Low	4.25	4.18	4.17	4.31	4.46	4.47
Low Date	03/04/2023	04/04/2023	03/04/2023	03/04/2023	06/04/2023	06/04/2023
Average	4.95	4.89	4.96	5.10	5.26	5.36
Spread	1.00	1.01	1.22	1.17	1.33	1.77



FINANCIAL YEAR TO QUARTER ENDED 29/12/2023							
	Bank Rate	SONIA	7 day	30 day	90 day	180 day	365 day
High	5.25	5.19	5.19	5.20	5.22	5.20	4.70
High Date	03/08/2023	24/11/2023	27/11/2023	12/12/2023	22/12/2023	29/12/2023	29/12/2023
Low	4.25	4.18	4.18	4.02	3.81	3.32	2.27
Low Date	03/04/2023	04/04/2023	11/04/2023	03/04/2023	03/04/2023	03/04/2023	03/04/2023
Average	4.95	4.89	4.88	4.84	4.71	4.43	3.60
Spread	1.00	1.01	1.01	1.18	1.41	1.88	2.43

The weighted average rate of return earned on investments for the third quarter of 2023/24 was 5.65%. The comparable performance indicator is the average 7-day backward looking SONIA rate, which was 5.19%. The Council's budgeted investment return for 2023/24 is **£589k**, and performance for the year is currently forecast to be **£662k** above budget.

Fund investments

- Money Market Funds (MMFs) – with the increase in the bank rates, the return on MMFs has followed the trend and were around 5.3% at the end of quarter one compared to circa 3.9% at the end of 2022/23.
- Property Funds – despite the value of the property fund declining slightly further from that at the end of March (£1.790m as at 31st December compared to £1.847m as at 31st March), there has been a positive move in the interest return with the Q3 return being 4.64% compared to 4.12% at the end of March.

Approved limits

Officers can confirm that the approved limits within the Annual Investment Strategy were not breached during the quarter ended 31st December 2023.

A full list of investments held as of 31st December 2023 is in Appendix 2.

4. Borrowing

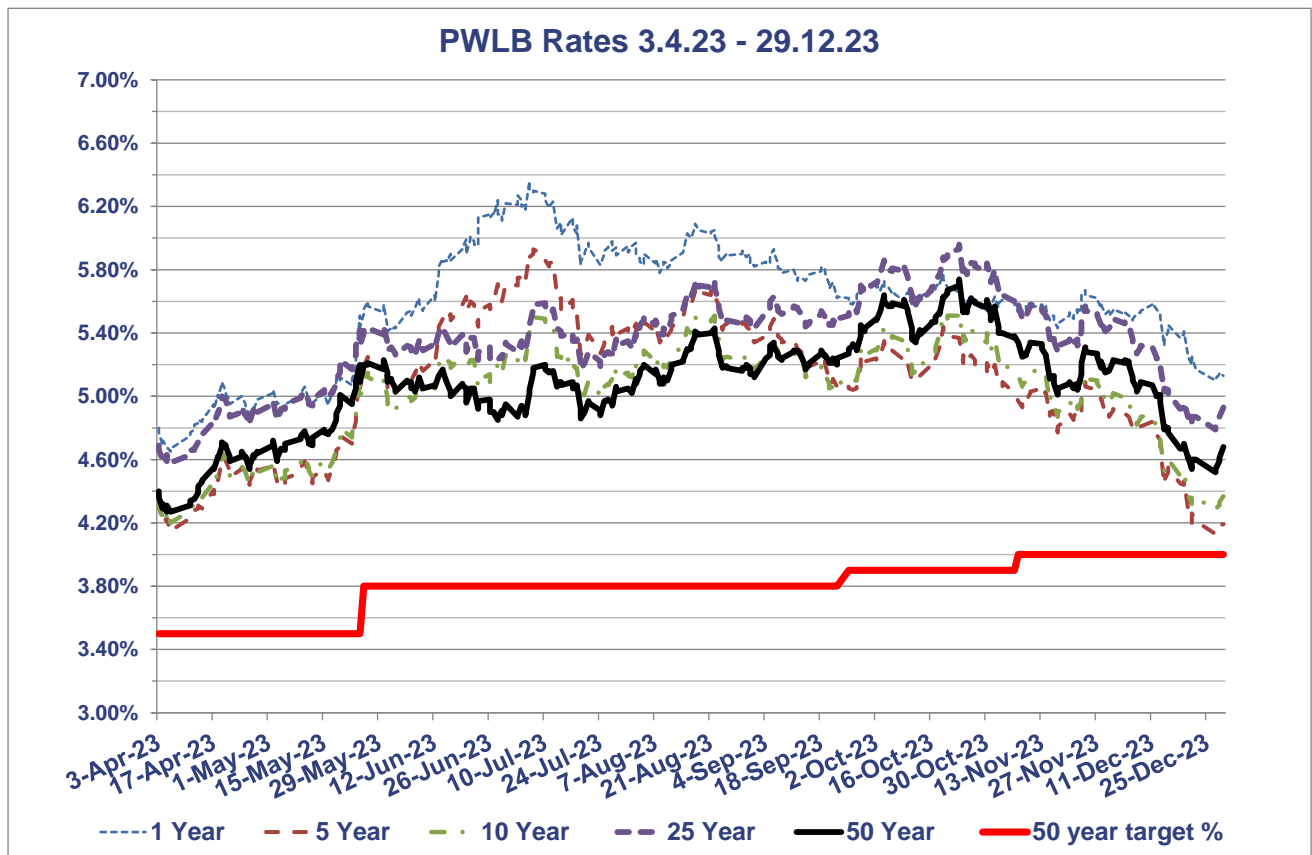
No borrowing was undertaken during the quarter ended 31st December 2023. It is anticipated that further borrowing will not be undertaken during this financial year.

PWLB maturity Certainty Rates 3rd April to 29th December 2023

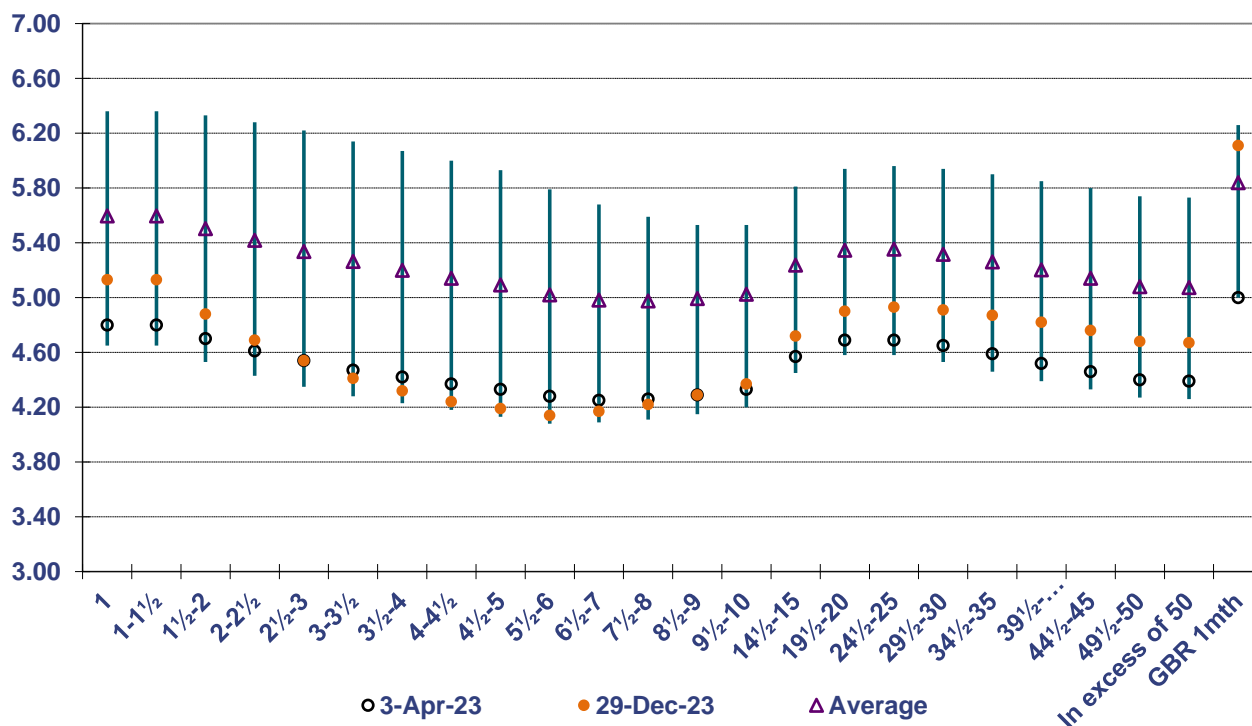
Gilt yields and PWLB rates were on a rising trend from April through to October but dropped back significantly in November and December.

The 50-year PWLB Certainty Rate target for new long-term borrowing started 2023/24 at 3.50% (the lowest forecast rate within a two-year time horizon), increasing to a peak of 4.00% in November. With rates elevated across the whole of the curve, it is advised to not borrow long-term unless the Authority wants certainty of rate and judges the cost to be affordable. (Please also note that from 15th June, HRA borrowing is 0.4% lower than the Certainty Rate.)

PWLB RATES 3.4.23 - 29.12.23 (note: the 1st/2nd April was a weekend)



PWLB Certainty Rate Variations 3.4.23 to 29.12.23



HIGH/LOW/AVERAGE PWLB RATES FOR 3.4.23 – 29.12.23

	1 Year	5 Year	10 Year	25 Year	50 Year
Low	4.65%	4.13%	4.20%	4.58%	4.27%
Date	06/04/2023	27/12/2023	06/04/2023	06/04/2023	05/04/2023
High	6.36%	5.93%	5.53%	5.96%	5.74%
Date	06/07/2023	07/07/2023	23/10/2023	23/10/2023	23/10/2023
Average	5.60%	5.09%	5.03%	5.35%	5.08%
Spread	1.71%	1.80%	1.33%	1.38%	1.47%

5. Debt rescheduling

Debt rescheduling opportunities have increased significantly in the current quarter where gilt yields, which underpin PWLB rates and market loans, have risen materially. Members will be advised if there is value to be had by rescheduling or repaying a part of the debt portfolio.

6. Compliance with Treasury and Prudential Limits

The prudential and treasury Indicators are shown in Appendix 1.

It is a statutory duty for the Council to determine and keep under review the affordable borrowing limits. During the *quarter ended* 31st December 2023, the Council has operated within the treasury and prudential indicators set out in the Council's Treasury Management Strategy Statement for 2023/24. The Director for Corporate Services reports that no difficulties are envisaged for the current or future years in complying with these indicators.

All treasury management operations have also been conducted in full compliance with the Council's Treasury Management Practices.

APPENDIX 1: Prudential and Treasury Indicators for 2023-24 as of 31st December 2023

Treasury Indicators	2023/24 Budget £'000	2023/24 Forecast £'000
Authorised limit for external debt	46,000	46,000
Operational boundary for external debt	34,000	34,000
Gross external debt	31,456	31,456
Investments	16,527	24,000
Net borrowing	14,929	7,456

Maturity structure of fixed rate borrowing - upper and lower limits	Lower	Upper	
Under 12 months	0%	50%	0.31%
12 months to 2 years	0%	50%	12.73%
2 years to 5 years	0%	50%	0.96%
5 years to 10 years	0%	50%	0.96%
10 years to 20 years *1	0%	50%	15.92%
20 years to 30 years *1	0%	50%	32.92%
30 years to 40 years *1	0%	50%	36.21%
40 years to 50 years *1	0%	50%	0%

Upper limit for principal sums invested over 365 days (split by financial years beyond current year end): - *2 Year 1 Year 2 Year 3 etc Total	Upper Limit £10m annually	Actual invested £2m (property fund)
--	------------------------------	--

Prudential Indicators	2023/24 Budget £'000		2023/24 Forecast £'000	
	HRA	GF	HRA	GF
Capital expenditure *	4,904	15,815	5,514	15,589
Capital Financing Requirement (CFR) *	31,484	293	31,484	43
Annual change in CFR *	0	-11	0	-11
In year borrowing requirement	0	0	0	0
Ratio of financing costs to net revenue stream *	29.33	-8.08	26.49	-14.2

APPENDIX 2: Investment Portfolio

Investments held as of 31st December 2023 compared to our counterparty list:

Melton Borough Council

Current Investment List

Borrower	Principal (£)	Interest Rate	Start Date	Maturity Date	Lowest LT / Fund Rating	Historic Risk of Default
MMF Deutsche	3,000,000	5.27%		MMF	AAAm	
MMF Insight	370,000	5.30%		MMF	AAAm	
MMF Invesco	3,000,000	5.37%		MMF	AAAm	
Lloyds Bank Plc (RFB)	1,500,000	6.04%	17/07/2023	17/01/2024	A+	0.002%
National Bank of Kuwait (International) PLC	3,000,000	5.87%	01/08/2023	01/02/2024	A	0.004%
Lloyds Bank Plc (RFB)	1,500,000	5.66%	12/06/2023	12/03/2024	A+	0.009%
Qatar National Bank	1,000,000	4.75%	20/03/2023	19/03/2024	A	0.010%
Lloyds Bank Plc (RFB)	1,000,000	6.29%	28/06/2023	28/03/2024	A+	0.011%
Lloyds Bank Plc (RFB)	2,000,000	5.14%	03/04/2023	02/04/2024	A+	0.012%
Qatar National Bank	1,000,000	5.27%	03/04/2023	02/04/2024	A	0.012%
National Bank of Kuwait (International) PLC	1,000,000	5.12%	12/04/2023	11/04/2024	A	0.013%
Qatar National Bank	3,000,000	5.92%	31/05/2023	30/05/2024	A	0.019%
Qatar National Bank	1,000,000	6.57%	27/06/2023	26/06/2024	A	0.022%
Standard Chartered Bank (ESG)	1,000,000	6.21%	01/08/2023	31/07/2024	A+	0.026%
Standard Chartered Bank (ESG)	1,000,000	6.15%	04/09/2023	03/09/2024	A+	0.031%
Standard Chartered Bank (ESG)	1,000,000	5.84%	03/10/2023	02/10/2024	A+	0.034%
First Abu Dhabi Bank PJSC	1,000,000	5.78%	01/11/2023	31/10/2024	AA-	0.019%
Borrower - Funds	Principal (£)	Interest Rate	Start Date	Maturity Date		
CCLA Property Fund	2,000,000	4.64%				
Total Investments	£28,370,000	5.58%				
Total Investments - excluding Funds	£26,370,000	5.65%				0.014%
Total Investments - Funds Only	£2,000,000	4.64%				

Note: An historic risk of default is only provided if a counterparty has a counterparty credit rating and is not provided for an MMF or USDBF, for which the rating agencies provide a fund rating. The portfolio's historic risk of default therefore measures the historic risk of default attached only to those investments for which a counterparty has a counterparty credit rating and also does not include investments which are not rated.

APPENDIX 3: Approved countries for investments as of 31st December 2023

Clients may wish to draw the attention of members to any changes to their approved list of countries for investments since their last report to members.

Based on lowest available rating

AAA

- Australia
- Denmark
- Germany
- Netherlands
- Norway
- Singapore
- Sweden
- Switzerland

AA+

- Canada
- Finland
- U.S.A.

AA

- Abu Dhabi (UAE)

AA-

- Belgium
- France (downgraded by Fitch on 9th May 2023)
- Qatar
- **U.K.**